

WINCHESTER COLLEGE EXTERNAL FOOTBALL FIXTURE LIST - 2011

DATE	OPPOSITION	SENIORS							COLTS				JUN COLTS					YEARLINGS					
		1	2	3	4	5	6	7	A	B	C	D	A	B	C	D	E	A	B	C	D	E	
SEPTEMBER 2011																							
Sun 4	Corinthian Casuals	H																					
Sat 10	Ardingly	A	A	A	A	A	A							H	H	H	A			H	H	H	A
Sun 11	ISFA Six a Side Competition	A																					
Thurs 15	St Bede's	A																					
Sat 17	K.E.S. Witley	A	A	A										H						H			
Sat 17	Alley's										H					H						H	
Tue 20	Ballard School																				A		
Tue 20	Frensham Heights														H								
Tue 29	ISFA Rnd 1	H																					
Thurs 22	Ibstock Place	H							H	H				H	H								
Tues 27	Aldenham	H	H	A					A					A	A	A				H	H	H	
OCTOBER 2011																							

DATE	OPPOSITION	SENIORS							COLTS				JUN COLTS					YEARLINGS						
		1	2	3	4	5	6	7	A	B	C	D	A	B	C	D	E	A	B	C	D	E		
Sat 1	Bradfield	H	H	H	H	A			A	A	A			H	H	H			A	A	A			
Tue 4	Eton										A	A		H	H	H	H				A	A	A	
Tue 4	Hampshire School U16	H																						
Sat 8	Charterhouse	H	H	H	H	H	A		A	A	A	A		A	A	A	A			H	H	H	H	H
Tue 11	Sherfield													A										
Tue 11	Westminster	A	H	H					H	H					A	A			H	H				
Thur 13	Ballard School								A							H								
Sat 15	Bedales	A	A											A					A					
NOVEMBER 2011																								
Tues 1	Lancing	A	A	A	A				A	A				H	H				H	H	H			
Sat 5	Alleyn's	H	H	H	H	H			H					H	H				H	H				
Tue 8	Horris Hill																				H			
Thur 10	Thorn Grove School																			H				
Thurs 10	Hampshire Schools U14, U15								H					H										

DATE	OPPOSITION	SENIORS							COLTS				JUN COLTS					YEARLINGS					
		1	2	3	4	5	6	7	A	B	C	D	A	B	C	D	E	A	B	C	D	E	
Sat 12	Old Boys	H	H	H																			
Sat 12	Crown and Manor								H					H						H			
Sat 12	Lord Wandsworth				H																		
Sat 12	K.E.S Witley														A					H			
Thurs 17	Bradfield				A						H	H			A	A	A					H	H
Thur 17	Twyford																			A	A		
Tue 22	Midhurst Rother College								H					H						H			
Sat 26	Eton	A	A	A	A	A	A	H	H	H	H			A	A	A	A	A		H	H	H	H
DECEMBER 2011																							
Sat 3	Marlborough	A	A	A	A				A														
Sat 3	Ardingly					H	H																

WINCHESTER COLLEGE INTERNAL FOOTBALL FIXTURES – 2011

1. The House Competitions will be coordinated by JMB. JMB will publish the fixtures, collate the results and arbitrate in any disputes. JMB will try to distribute the pitches fairly between the Houses. JMB, in consultation with MLB will determine the groups for Foster Pot. He will also determine the groups for Chawker Pot in consultation with LC and APM.

FLOWER POT

2. The Flower Pot competition will consist of 11 Fixtures, which will occur on the dates shown in the table below.

Serial (a)	Date (b)	Round (c)
1	09 Sep 11	Flower Pot I
2	16 Sep 11	Flower Pot II
3	30 Sep 11	Flower Pot III
4	07 Oct 11	Flower Pot IV
5	14 Oct 11	Flower Pot V
6	04 Nov 11	Flower Pot VI
7	11 Nov 11	Flower Pot VII
8	18 Nov 11	Flower Pot VIII
9	25 Nov 11	Flower Pot IX
10	02 Dec 11	Flower Pot X
11	09 Dec 11	Flower Pot XI

3. The fixture grid for the dates will be:

	A	B	C	D	E	F	G	H	I	K	X	Z
A												
B	6											
C	7	8										
D	8	9	10									
E	9	10	11	1								
F	10	11	1	2	3							
G	11	1	2	3	4	5						
H	1	2	3	4	5	6	7					
I	2	3	4	5	6	7	8	9				
K	3	4	5	6	7	8	9	10	11			
X	4	5	6	7	8	9	10	11	1	2		
Z	5	7	9	11	2	4	6	8	10	1	3	

ELLIS POT

4. The Ellis Pot competition will consist of 11 Fixtures, which will occur on the dates shown in the table below.

Serial (a)	Date (b)	Round (c)
1	05 Sep 11	Ellis Pot I
2	12 Sep 11	Ellis Pot II
3	19 Sep 11	Ellis Pot III
4	26 Sep 11	Ellis Pot IV
5	03 Oct 11	Ellis Pot V
6	10 Oct 11	Ellis Pot VI
7	17 Oct 11	Ellis Pot VII
8	31 Oct 11	Ellis Pot VIII
9	07 Nov 11	Ellis Pot IX
10	14 Nov 11	Ellis Pot X
11	28 Nov 11	Ellis Pot XI

5. The fixture grid for the dates will be:

	A	B	C	D	E	F	G	H	I	K	X	Z
A												
B	1											
C	2	3										
D	3	4	5									
E	4	5	6	7								
F	5	6	7	8	9							
G	6	7	8	9	10	11						
H	7	8	9	10	11	1	2					
I	8	9	10	11	1	2	3	4				
K	9	10	11	1	2	3	4	5	6			
X	10	11	1	2	3	4	5	6	7	8		
Z	11	2	4	6	8	10	1	3	5	7	9	

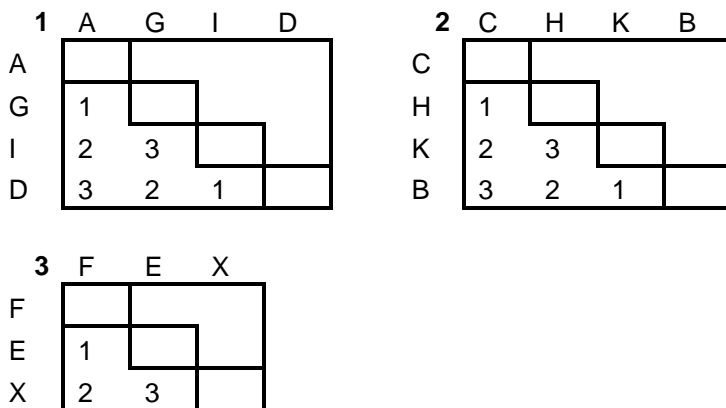
CHAWKER POT

6. Chawker Pot will be played throughout the term as detailed in the table below. Where possible, the dates have been chosen when there is not a major school fixture on the subsequent Saturday.

Serial (a)	Date (b)	Round (c)
1	Thurs 06 Oct 11	Chawker Pot I
2	Tues 18 Oct 11	Chawker Pot II
3	Tue 08 Nov 11	Chawker Pot III
4	Tue 15 Nov 11	Chawker Pot Semi Final

Serial (a)	Date (b)	Round (c)
5	Thurs 17 Nov 11	Chawker Pot Final

7. The league for the Chawker Pot competition will be decided by the MIC Soccer after the selection of teams for the Ardingly fixture. The structure of the initial rounds is shown below:

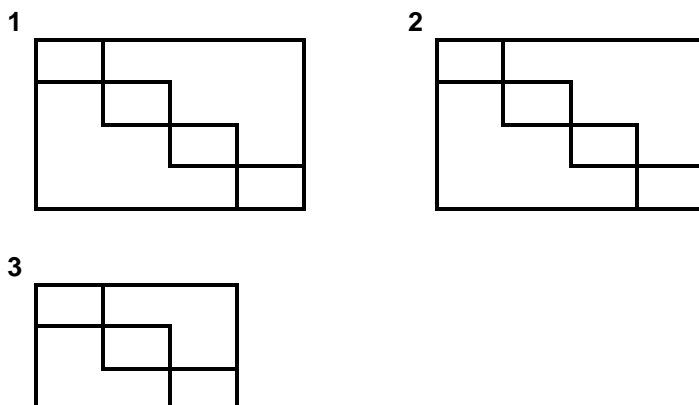


FOSTER POT

8. Foster Pot will be played during the last two weeks of Short Half.

Serial (a)	Date (b)	Round (c)
1	Tue 18 Oct 11	Foster Pot I
2	Tue 29 Nov 11	Foster Pot II
3	Thurs 01 Dec 11	Foster Pot III
4	Sat 03 Dec 11	Foster Pot Semi Final
5	Tue 06 Dec 11	Foster Pot Final

9. The fixtures for the Foster Pot competition will be drawn after leave out at the beginning of Nov 09. Once complete, the fixtures schedule will be forwarded to all houses.



SOCCER STAFFING 2011

1. The table below lists the Masters that will be in charge of the school teams.

Serial (a)	Team (b)	Staff (c)
1	1 st XI	SEH, LC, JMB
2	2 nd XI	APM
3	3 rd XI	AV
4	4 th XI	NIPM (IC Gater Field)
5	5 th XI	LMG
6	6 th / 7 th XI	LJQ
7	Senior Colts A	GJW*, CJG, Branfoot,
8	Senior Colts B	CGY, JJCW
9	Senior Colts C/D	Leigh
10	Junior Colts A	GEM*, Jones
11	Junior Colts B	Rogers, CNB
12	Junior Colts C	DIF, French
13	Junior Colts D	RSN
14	Yearlings A	MLB*, SDR
15	Yearlings B	PAH
16	Yearlings C, D & E	TEG, NF, Williams

Notes:

* Head of Year Group.

1. The first name of the staff next to each team will take administrative responsibility for the team(s).

2. This year we are very well placed with the manpower available to train the teams. The Head of Year Group is to support all the teams within their age group, ensuring that structured practices are carried out.

3. NIPM will take overall responsibility for the co-ordination of the activity on Gater Field for the 4th – 7th XI.

4. In addition to those supporting football teams, the following personnel are detailed to support the refereeing of House Matches: PAN, APD, MRSN, JJLD, MR, PSAT, MJW, LCW & SKW. Your support in signing up for House Matches early is greatly appreciated.

5. If staff are unable to make a fixture, please let me know as there are now members of Common Room who are allocated as 'Away Cover' to support the Dons in charge of teams.